

THE THAMES

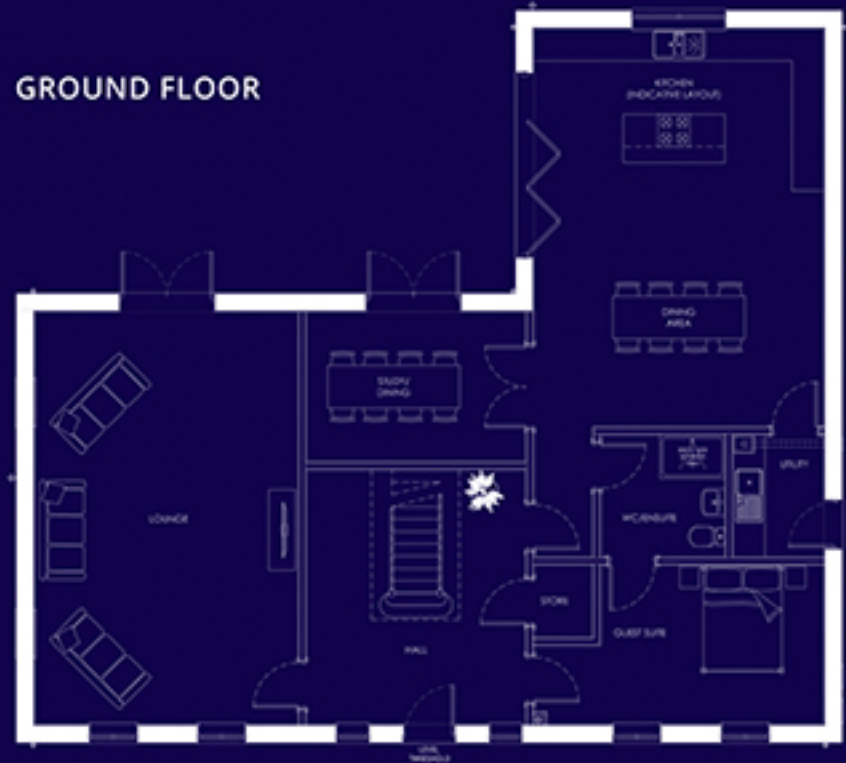


A FIVE BEDROOM EXECUTIVE HOME

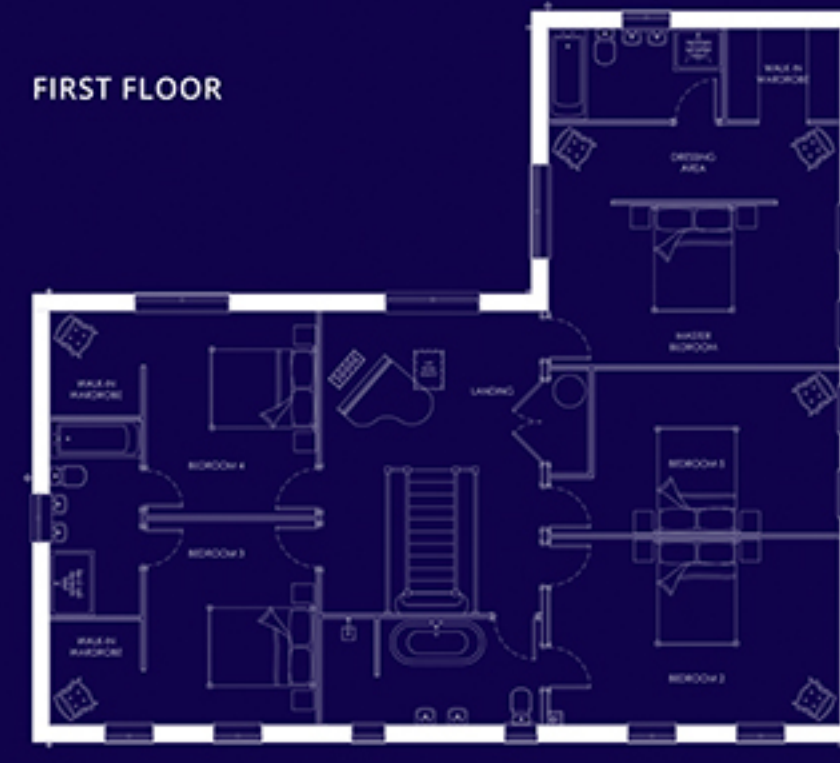
H M
HOLBEACH MEADOWS
PHASE 1



The Thames is a five bedroom executive home, perfect for large families and spacious living.



LOUNGE	7.71 x 4.93	25'4 x 16'2
KITCHEN/DINING	9.87 x 5.42	32'5 x 17'10
UTILITY ROOM	2.28 x 1.70	7' 6 x 5' 7
STUDY	4.10 x 2.80	13'6 x 9' 2
GUEST SUITE	5.42 x 2.98	17'10 x 9' 9
WC/EN-SUITE	2.32 x 2.28	7' 7 x 7' 6



BEDROOM ONE	5.42 x 4.51	17'10 x 14'10
BEDROOM ONE EN-SUITE	3.24 x 1.70	10'8 x 5' 7
BEDROOM TWO	5.42 x 3.47	17'10 x 11'5
BEDROOM 2 EN-SUITE	4.11 x 1.98	13'6 x 6' 6
BEDROOM THREE	4.99 x 3.81	16'4 x 12'6
BEDROOM FOUR	4.99 x 3.81	16'4 x 12'6
BEDROOM 3 & 4 EN-SUITE	3.66 x 1.70	12'0 x 5' 7
BEDROOM FIVE	5.42 x 3.08	17'10 x 10'1

These dimensions are guides only and should not be used as a basis for the purchase of furnishings. Individual properties may vary from the illustrations shown. Please refer to the Holbeach Meadows executive specification for these house types.